

THE ADDISON

831 E. MOREHEAD STREET, SUITE 740 | CHARLOTTE, NC 28202



OFFICE SPACE IN MIDTOWN AVAILABLE FOR LEASE

±4,394 SF

- Nine-story office building, ±68,000 SF
- An upper floor, corner suite with Midtown views
- Built in 1926 as Charlotte's first luxury condominium; Converted to office and expanded in 1997
- Abundant parking with a covered deck at a 3 per 1,000 SF ratio
- Excellent visibility at signalized intersection
- Registered as a local Historic Landmark
- Ideal location between Dilworth, Midtown and CBD, with easy access to I-77 & I-277
- Numerous amenities nearby including Dowd YMCA, the Metropolitan, restaurants/retail, The Little Sugar Creek Greenway and Atrium Health's Main Campus
- Beacon Partners leases and manages over 1 million SF in the Midtown and South End areas



FOR MORE INFORMATION, CONTACT:

CLAIRE SHEALY

704.926.1409 | claire@beacondevelopment.com

500 East Morehead Street | Suite 200 | Charlotte, NC 28202

www.beacondevelopment.com

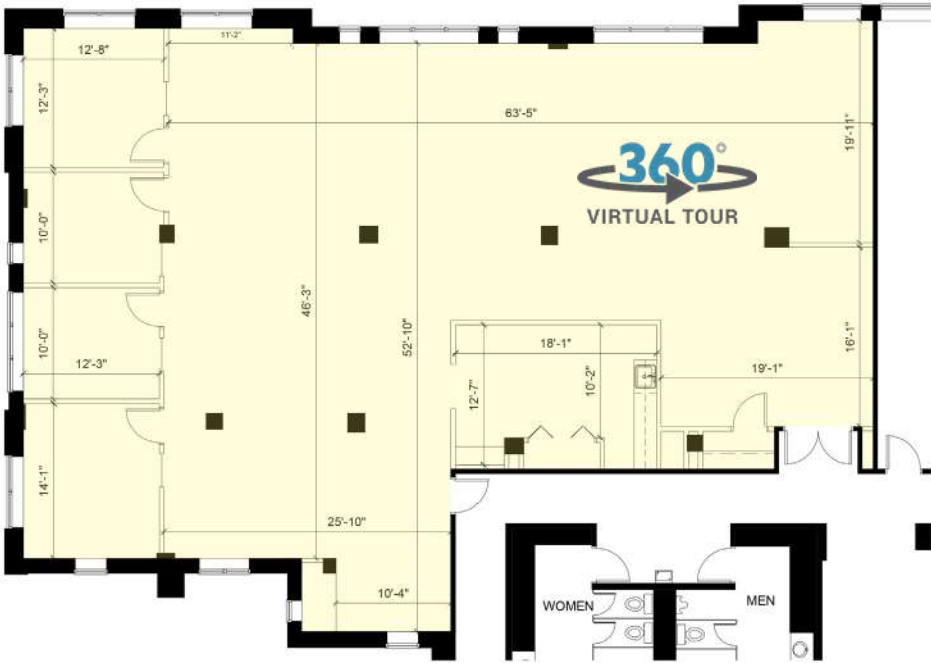


**BEACON
PARTNERS**

THE ADDISON

831 E. MOREHEAD STREET, SUITE 740 | CHARLOTTE, NC 28202

SUITE 740: \pm 4,394 SF



FOR MORE INFORMATION, CONTACT:
CLAIRE SHEALY
704.926.1409 | claire@beacondevelopment.com
500 East Morehead Street | Suite 200 | Charlotte, NC 28202
www.beacondevelopment.com



All information regarding the property was obtained from sources deemed reliable but no warranty or representation is made of the accuracy thereof, and the property is subject to prior sale, lease or withdrawal.