



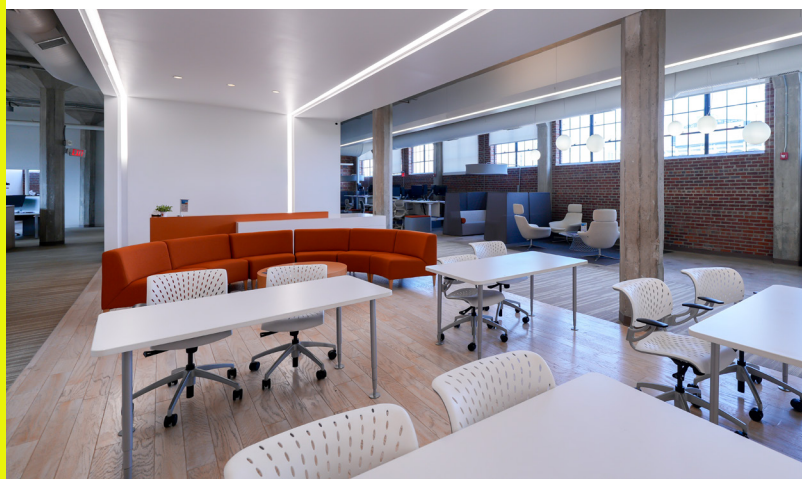
TAKE A TOUR



THE BOXER BUILDING

CENTRALLY LOCATED ADAPTIVE REUSE BUILDING

Built in 1927 and listed on the National Register of Historic Places, the Boxer Building was originally used for warehouse space, but was converted into an office building in 2000. It features expansive high ceilings and large steel-sash windows with prominent Uptown Charlotte views. It's located adjacent to Central Business District, South End and FreeMoreWest.



CLAIRE SHEALY

704.607.1984 (c)

704.926.1409 (d)

claire@beacondevelopment.com



**BEACON
PARTNERS**

1000
W MOREHEAD
STREET
CHARLOTTE, NC



1000 W. MOREHEAD AT A GLANCE

The Boxer Building's use of concrete, brick and steel exemplifies the innovations in structural engineering and factory and warehouse design that transformed industrial construction during the early 20th Century.



1000
WEST MOREHEAD
NEAR CENTRAL
BUSINESS DISTRICT,
SOUTH END AND
FREEMOREWEST



FREE
PARKING
ON-SITE



IMMEDIATE
ACCESS TO
1-77 + I-277



THREE-STORY
40,000 SF
OFFICE BUILDING



LOFTED
CEILINGS TO
17 FT



WALKING
DISTANCE
To Bank of America
Stadium and Truist Field



THE BOXER BUILDING



AREA AMENITIES

BREAKFAST + COFFEE

Dunkin'
Not Just Coffee
Enderly Coffee Co
The Batchmaker



ENTERTAINMENT

Clutch Kitchen & Pour House
Legion Brewing
Town Brewing Co
Hoppin'
Charlotte Beer Garden
Slingshot
The Rose



LUNCH + DINNER

Azul Tacos
Counter
Pinky's Westside Grill
Noble Smoke
Bossy Beulah's
Restaurant Constance
Ed's Freemore Tavern
Que Fresa Taqueria + Bar
Maiz Agua Sal
Pizza Baby
Rhino Market & Deli
Community Matters Cafe
Sixty Vines
Culinary Dropout
Illos Crafted Greek
Yume Ramen Sushi & Bar
Tora Sushi & Bar
Stir
North Italia



FITNESS + OUTDOORS

Coterie Wellness Studio
Yoga For Life
Bryant Park
Orange Theory



**CLOSE PROXIMITY TO UPTOWN,
SOUTH END, AND FREEMOREWEST**



THE BOXER BUILDING



A LOOK BACK THROUGH THE YEARS

1000 W. Morehead exemplifies the commercial storage warehouses built in Charlotte during the early twentieth century when the city emerged as a regional industrial, distribution, and commercial center.



1927

The building at 1000 West Morehead Street was constructed and first occupied by Union Storage and Warehouse.

1942

Ford Motor Company acquired the building for use as an automobile repair establishment.

1950s

Building purchased by Southern Appliances, Inc., a regional distributor of household appliances.



1970s

Building purchased by Karl Boxer Textile Machinery Company for storage and distribution of knitting machines and related supplies and equipment for the textile industry.



2000

Building is sold with plans to rehabilitate into office and obtains historic status. The conversion reflected the renewed interest in the area because of the I-77 access and increased commercial and residential development in Uptown Charlotte.



TODAY

The Boxer Building is an iconic landmark in Charlotte that attracts tenants who seek a unique work space to compliment their brand.

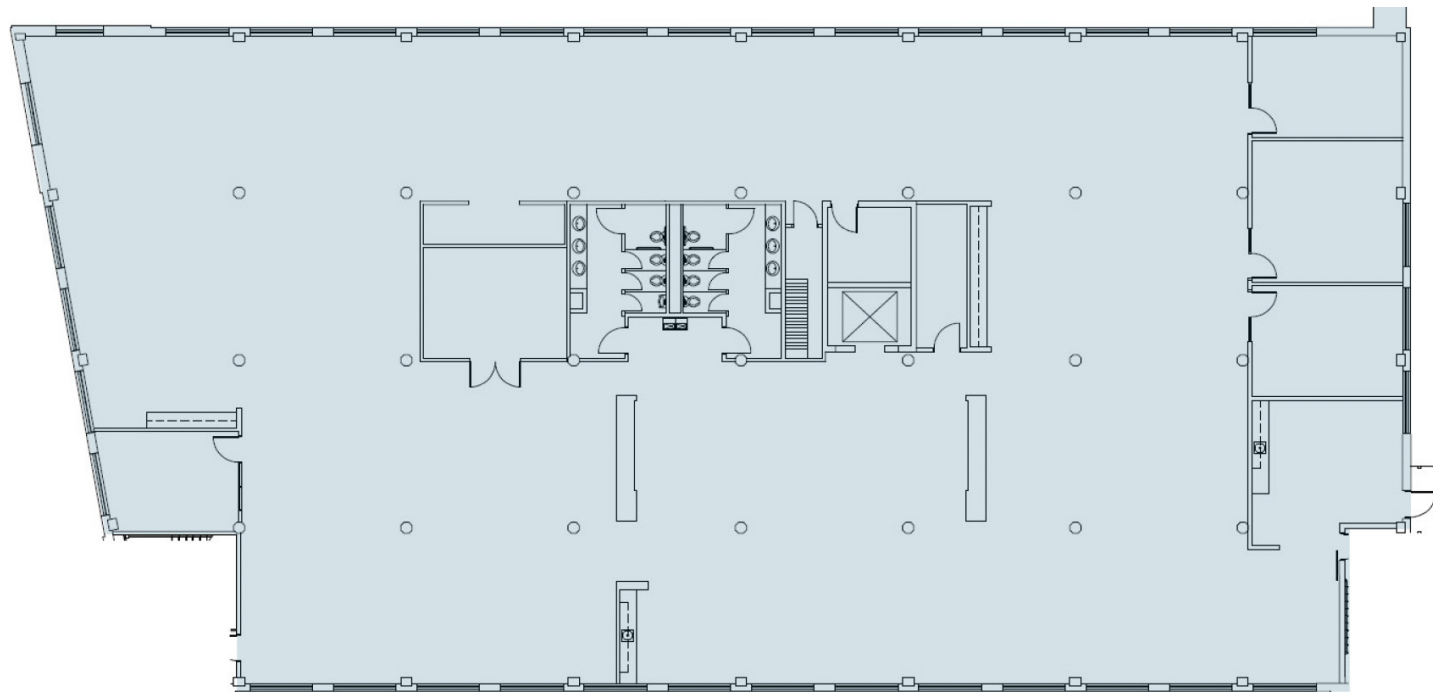
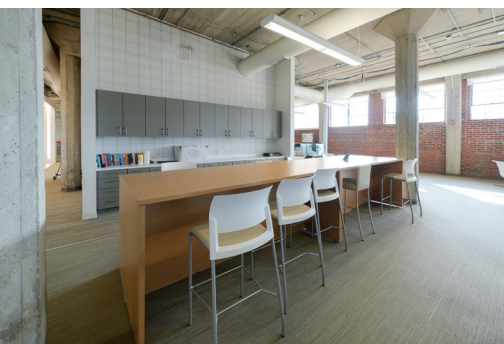


THE BOXER BUILDING



+13,768 SF
FOR LEASE
SUITE 200

MOVE-IN READY, CREATIVE SPACE IN THE HISTORIC BOXER BUILDING



CLAIRE SHEALY

704.607.1984 (c)

704.926.1409 (d)

claire@beacondevelopment.com



THE BOXER BUILDING