

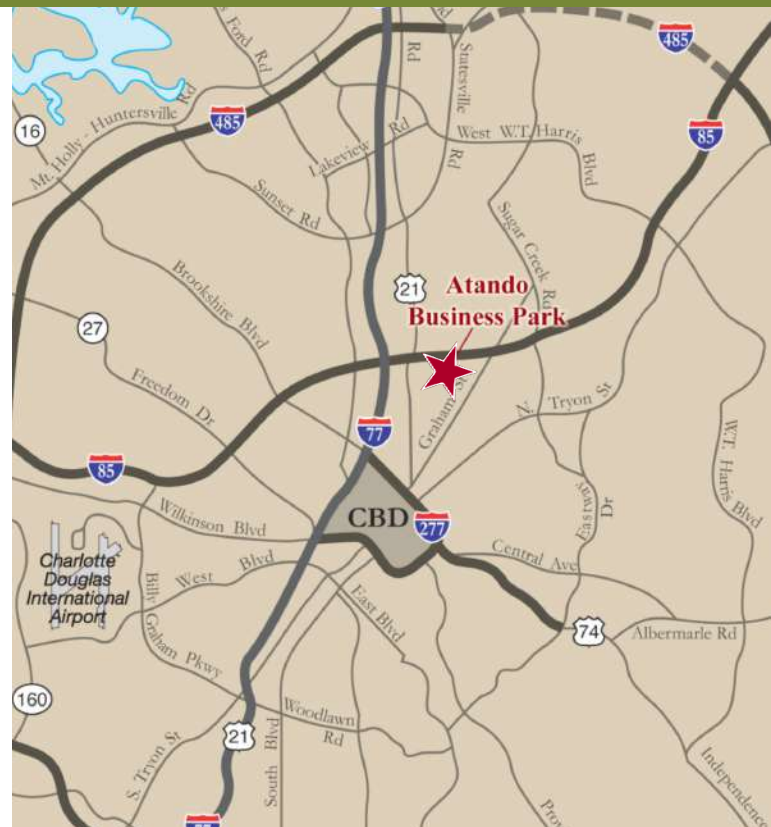
±10,160 SF WAREHOUSE FOR LEASE | CENTRAL CHARLOTTE

ATANDO BUSINESS PARK | 1317 UPPER ASBURY AVENUE | CHARLOTTE, NC 28206



FEATURES:

- ±10,160 SF warehouse facility
- ±1,364 SF of office space
- Front load facility; truck court 130'
- Potential outside storage
- Wet sprinkler
- 2 dock high doors
- 19' clear height
- Professional park environment
- Direct access to the park from I-77 at Atando/LaSalle (Exit 12)
- Central Charlotte location with immediate access to I-85, I-77, the CBD and a UPS facility



FOR MORE INFORMATION, CONTACT:

JACK RIAZZI

704.926.1412 (d)

jack@beacondevelopment.com

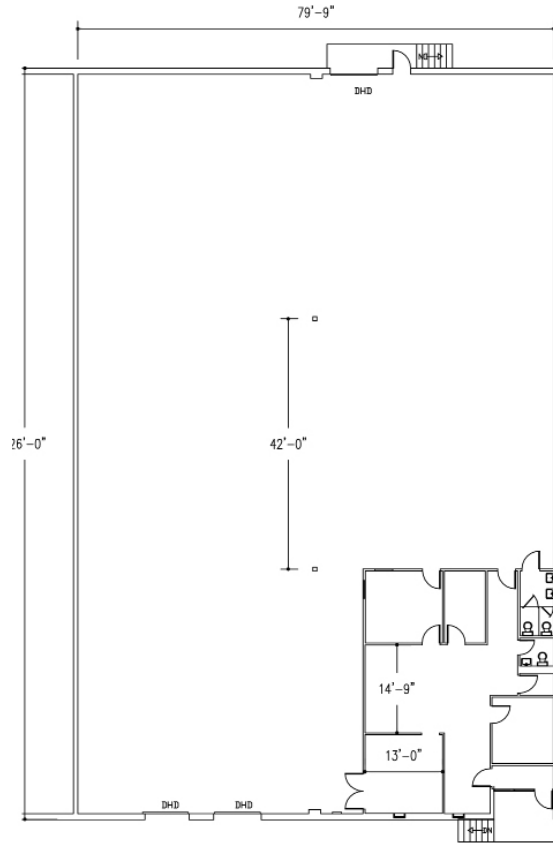
500 E. Morehead Street, Suite 200 | Charlotte, NC 28202 | www.beacondevelopment.com



±10,160 SF WAREHOUSE FOR LEASE | CENTRAL CHARLOTTE

ATANDO BUSINESS PARK | 1317 UPPER ASBURY AVENUE | CHARLOTTE, NC 28206

FLOOR PLAN:



±10,160 TOTAL SF

±1,364 SF OFFICE

AERIAL:



FOR MORE INFORMATION, CONTACT:

JACK RIAZZI

704.926.1412 (d)

jack@beacondevelopment.com

500 E. Morehead Street, Suite 200 | Charlotte, NC 28202 | www.beacondevelopment.com

