

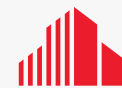
FOR LEASE

EDWARDIA INDUSTRIAL PARK

322-406 EDWARDIA DRIVE, GREENSBORO, NC 27409



BEACON
PARTNERS



CUSHMAN &
WAKEFIELD

EDWARDIA INDUSTRIAL PARK

322 - 406 EDWARDIA DRIVE, GREENSBORO, NC 27409

LOCATION AERIAL



EDWARDIA INDUSTRIAL PARK

322 - 406 EDWARDIA DRIVE, GREENSBORO, NC 27409

BUILDING AERIAL

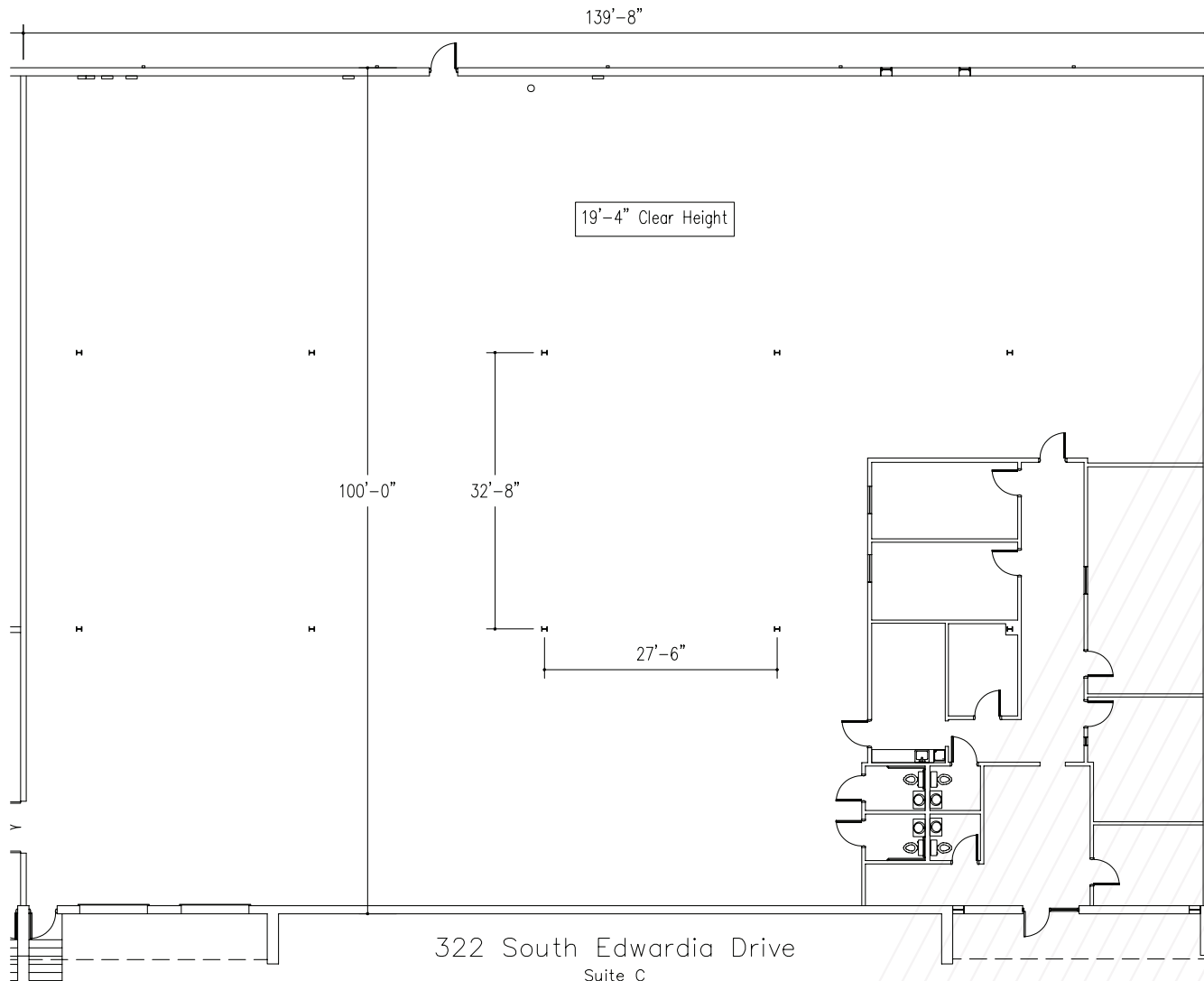


EDWARDIA INDUSTRIAL PARK

322 - 406 EDWARDIA DRIVE, GREENSBORO, NC 27409

SPACE AVAILABILITY

BUILDING 322 - SUITE C



322 South Edwardia Drive

Suite C

14,050 SF

2,131 Office SF

1-8x8 Dock Door

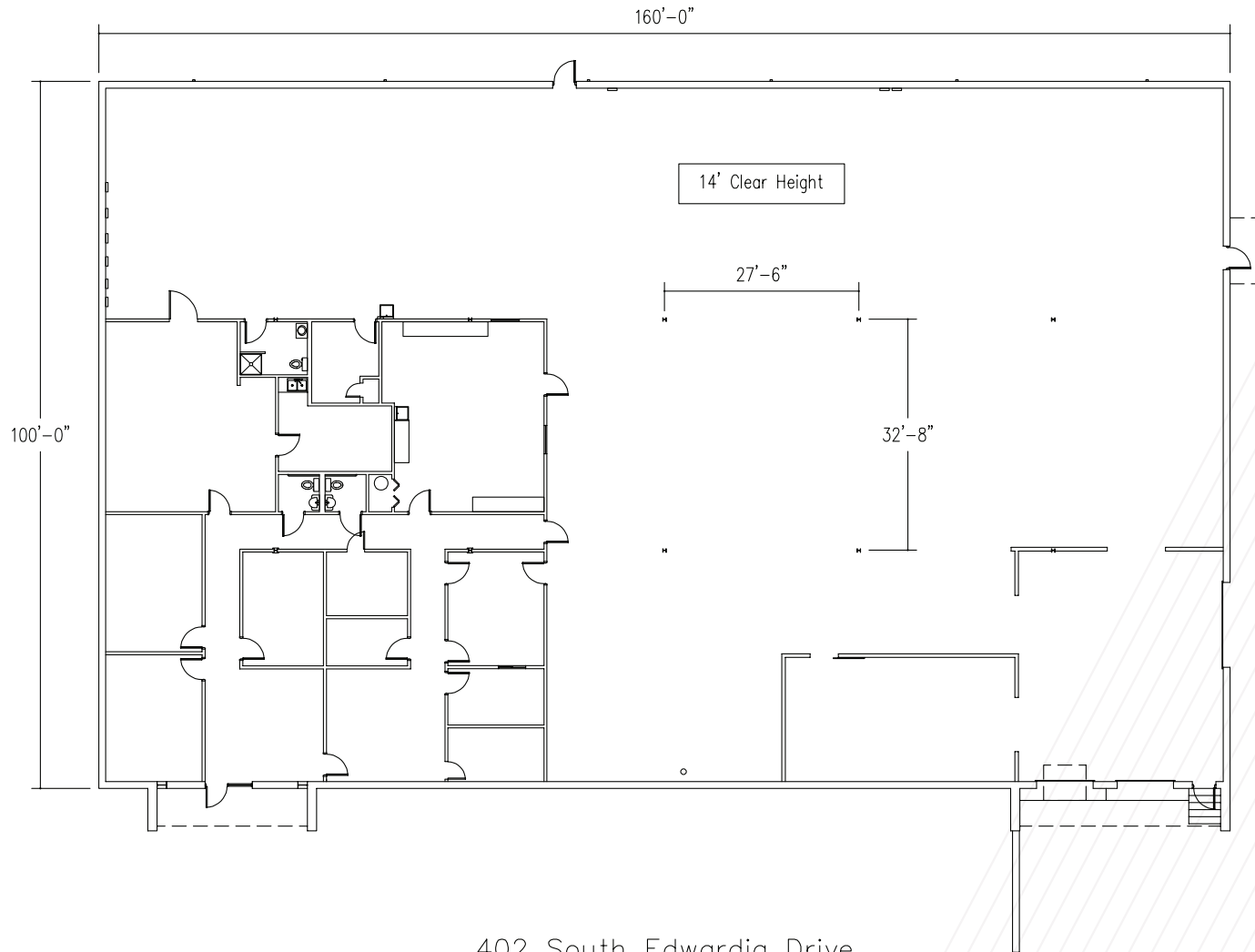
1-8x10 Dock Door

EDWARDIA INDUSTRIAL PARK

322 - 406 EDWARDIA DRIVE, GREENSBORO, NC 27409

SPACE AVAILABILITY

BUILDING 402



402 South Edwardia Drive

16,000 SF

4,182 Office SF


1-8x8 Dock Door


1-8x10 Dock Door w/ Pit Leveler


1-12x12 Drive In Door


EDWARDIA INDUSTRIAL PARK


322 - 406 EDWARDIA DRIVE, GREENSBORO, NC 27409


BUILDING 322	
	<p>Size: 56,550 SF</p> <p>Clear Height: 18'4"</p> <p>Column Spacing: 32'7" x 26'10"</p> <p>Dock Doors: 8 (7: 8'x8' & 1: 8'x10')</p> <p>Drive-in Doors: 2 (2: 12'x14')</p> <p>Sprinkler: Wet System</p>


BUILDING 402	
	<p>Size: 16,000 SF</p> <p>Clear Height: 14'</p> <p>Column Spacing: 32'8" x 27'6"</p> <p>Dock Doors: 2 (1: 8'x8' & 1: 8'x10')</p> <p>Drive-in Doors: 1 (12'x12')</p> <p>Sprinkler: Wet System</p>

BUILDING 324	
	<p>Size: 30,000 SF</p> <p>Clear Height: 19'4"</p> <p>Column Spacing: 32'8" x 27'6"</p> <p>Dock Doors: 5 (2: 8'x8' & 3: 8'x10')</p> <p>Drive-in Doors: 2 (1: 12'x10' & 1: 12'x14')</p> <p>Sprinkler: Wet System</p>

BUILDING 404	
	<p>Size: 40,000 SF</p> <p>Clear Height: 15'11"</p> <p>Column Spacing: 32'8" x 27'6"</p> <p>Dock Doors: 4 (1: 8'x8' & 2: 8'x10')</p> <p>Drive-in Doors: 3 (2: 8'x8' & 1: 8'x10')</p> <p>Sprinkler: Wet System</p>

BUILDING 326	
	<p>Size: 7,200 SF</p> <p>Clear Height: 14'3"</p> <p>Column Spacing: 32'8" x 27'6"</p> <p>Dock Doors: 1 (8' x 8')</p> <p>Drive-in Doors: 1 (8'x 8')</p> <p>Sprinkler: Wet System</p>

BUILDING 406	
	<p>Size: 2,600 SF</p> <p>Notes: All office currently</p> <p>Sprinkler: Wet System</p>

BUILDING 400	
	<p>Size: 32,000 SF</p> <p>Clear Height: 14'</p> <p>Column Spacing: 32'8" x 27'6"</p> <p>Dock Doors: 2 (1: 8'x8' & 1: 8'x10')</p> <p>Drive-in Doors: 1 (12'x12')</p> <p>Sprinkler: Wet System</p>

EDWARDIA INDUSTRIAL PARK

322 - 406 EDWARDIA DRIVE, GREENSBORO, NC 27409

LOCATOR MAP



EDWARDIA INDUSTRIAL PARK

322-406 EDWARDIA DRIVE, GREENSBORO, NC 27409

FOR MORE INFORMATION, CONTACT:

JASON OFSANKO, SIOR

Senior Director

+1 336 812 3300

jason.ofsanko@cushwake.com

JORDAN MITCHELL

Senior Associate

+1 336 201 0495

jordan.mitchell@cushwake.com

WILLIAM MANN

Associate, Beacon Partners

+1 704 926 1407

william@beacondevelopment.com

©2022 Cushman & Wakefield. All rights reserved. The material in this presentation has been prepared solely for information purposes, and is strictly confidential. Any disclosure, use, copying or circulation of this presentation (or the information contained within it) is strictly prohibited, unless you have obtained Cushman & Wakefield's prior written consent. The views expressed in this presentation are the views of the author and do not necessarily reflect the views of Cushman & Wakefield. Neither this presentation nor any part of it shall form the basis of, or be relied upon in connection with any offer, or act as an inducement to enter into any contract or commitment whatsoever. NO REPRESENTATION OR WARRANTY IS GIVEN, EXPRESS OR IMPLIED, AS TO THE ACCURACY OF THE INFORMATION CONTAINED WITHIN THIS PRESENTATION, AND CUSHMAN & WAKEFIELD IS UNDER NO OBLIGATION TO SUBSEQUENTLY CORRECT IT IN THE EVENT OF ERRORS.

