

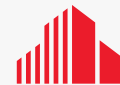
FOR LEASE

EDWARDIA INDUSTRIAL PARK

322-406 EDWARDIA DRIVE, GREENSBORO, NC 27409



BEACON
PARTNERS



CUSHMAN &
WAKEFIELD

EDWARDIA INDUSTRIAL PARK

322 - 406 EDWARDIA DRIVE, GREENSBORO, NC 27409

LOCATION AERIAL



EDWARDIA INDUSTRIAL PARK

322 - 406 EDWARDIA DRIVE, GREENSBORO, NC 27409

BUILDING AERIAL

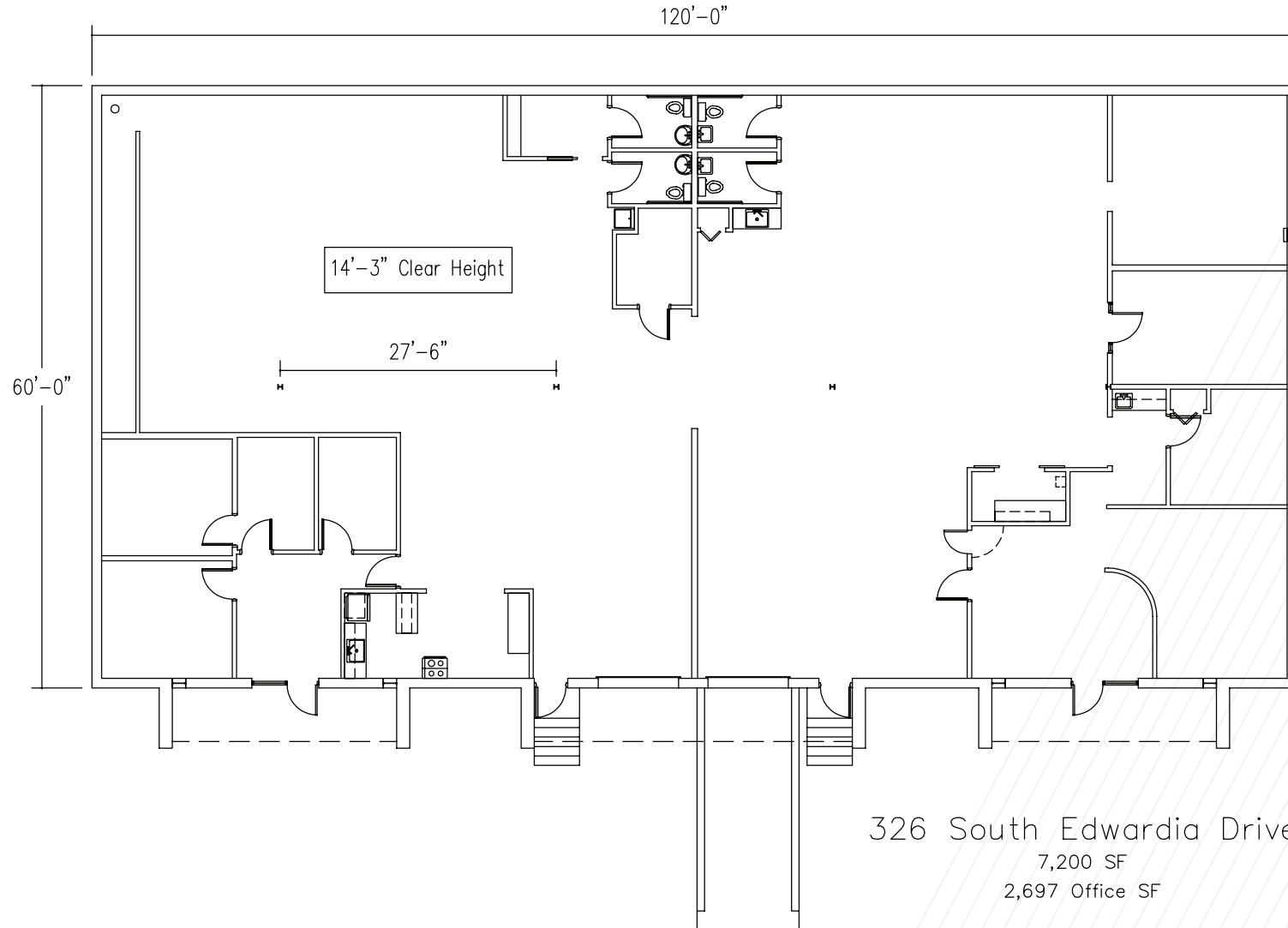


EDWARDIA INDUSTRIAL PARK

322 - 406 EDWARDIA DRIVE, GREENSBORO, NC 27409

SPACE AVAILABILITY

BUILDING 326

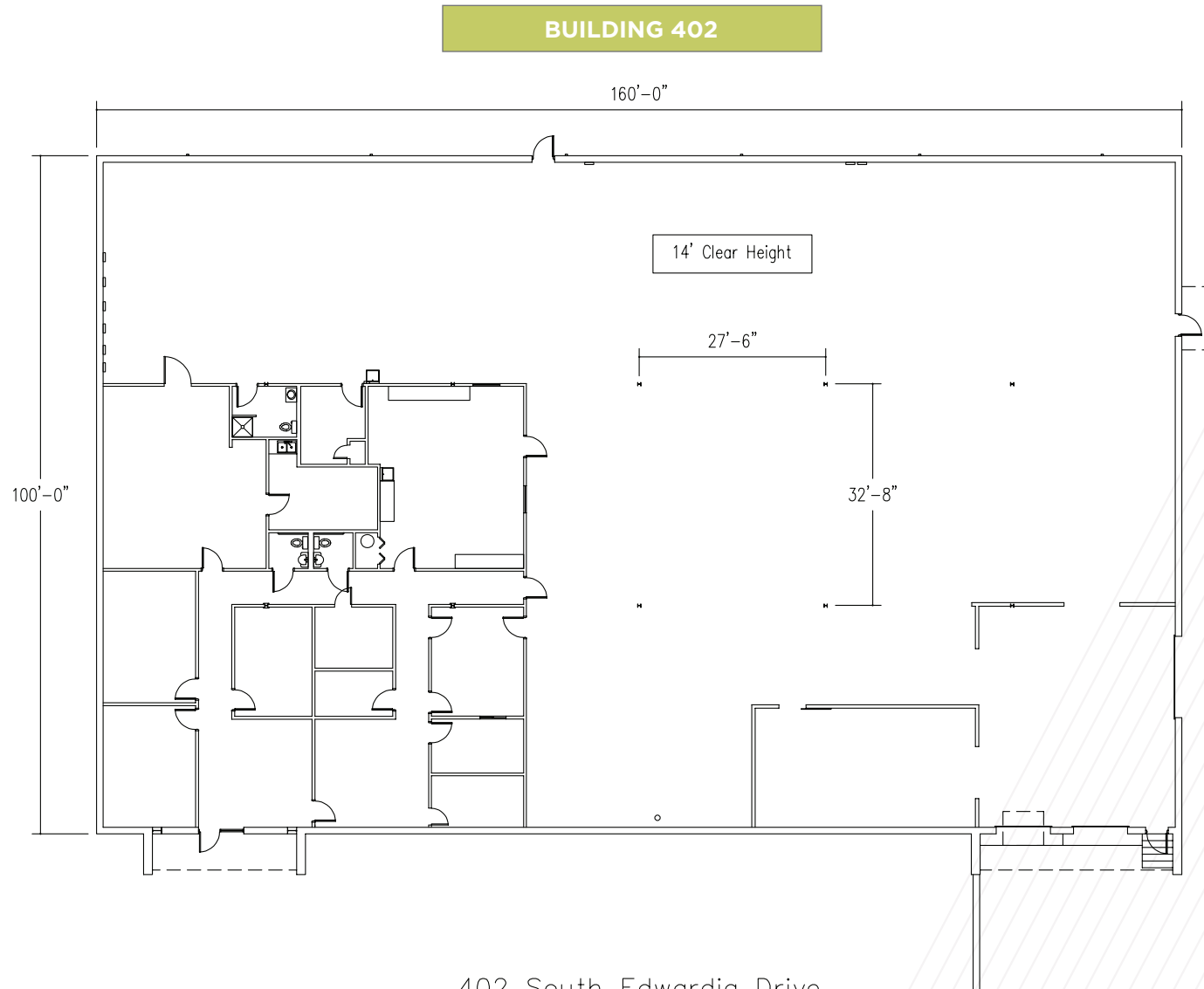


1-8x8 Dock Door
1-8x8 Drive In Door

EDWARDIA INDUSTRIAL PARK

322 - 406 EDWARDIA DRIVE, GREENSBORO, NC 27409

SPACE AVAILABILITY



402 South Edwardia Drive

16,000 SF

4,182 Office SF


1-8x8 Dock Door


1-8x10 Dock Door w/ Pit Leveler


1-12x12 Drive In Door


EDWARDIA INDUSTRIAL PARK


322 - 406 EDWARDIA DRIVE, GREENSBORO, NC 27409


BUILDING 322	
	Size: 56,550 SF
	Clear Height: 18'4"
	Column Spacing: 32'7" x 26'10"
	Dock Doors: 8 (7: 8'x8' & 1: 8'x10')
	Drive-in Doors: 2 (2: 12'x14')
	Sprinkler: Wet System


BUILDING 324	
	Size: 30,000 SF
	Clear Height: 19'4"
	Column Spacing: 32'8" x 27'6"
	Dock Doors: 5 (2: 8'x8' & 3: 8'x10')
	Drive-in Doors: 2 (1: 12'x10' & 1: 12'x14')
	Sprinkler: Wet System

BUILDING 326	
	Size: 7,200 SF
	Clear Height: 14'3"
	Column Spacing: 32'8" x 27'6"
	Dock Doors: 1 (8' x 8')
	Drive-in Doors: 1 (8'x 8')
	Sprinkler: Wet System

BUILDING 400	
	Size: 32,000 SF
	Clear Height: 14'
	Column Spacing: 32'8" x 27'6"
	Dock Doors: 2 (1: 8'x8' & 1: 8'x10')
	Drive-in Doors: 1 (12'x12')
	Sprinkler: Wet System

BUILDING 402	
	Size: 16,000 SF
	Clear Height: 14'
	Column Spacing: 32'8" x 27'6"
	Dock Doors: 2 (1: 8'x8' & 1: 8'x10')
	Drive-in Doors: 1 (12'x12')
	Sprinkler: Wet System

BUILDING 404	
	Size: 40,000 SF
	Clear Height: 15'11"
	Column Spacing: 32'8" x 27'6"
	Dock Doors: 4 (1: 8'x8' & 2: 8'x10')
	Drive-in Doors: 3 (2: 8'x8' & 1: 8'x10')
	Sprinkler: Wet System

BUILDING 406	
	Size: 2,600 SF
	Notes: All office currently
	Sprinkler: Wet System

EDWARDIA INDUSTRIAL PARK

322 - 406 EDWARDIA DRIVE, GREENSBORO, NC 27409

LOCATOR MAP



EDWARDIA INDUSTRIAL PARK

322-406 EDWARDIA DRIVE, GREENSBORO, NC 27409

FOR MORE INFORMATION, CONTACT:

JASON OFSANKO, SIOR

Senior Director

+1 336 812 3300

jason.ofsanko@cushwake.com

JORDAN MITCHELL

Senior Associate

+1 336 201 0495

jordan.mitchell@cushwake.com

WILLIAM MANN

Beacon Partners

+1 704 926 1407

william@beacondevelopment.com

©2022 Cushman & Wakefield. All rights reserved. The material in this presentation has been prepared solely for information purposes, and is strictly confidential. Any disclosure, use, copying or circulation of this presentation (or the information contained within it) is strictly prohibited, unless you have obtained Cushman & Wakefield's prior written consent. The views expressed in this presentation are the views of the author and do not necessarily reflect the views of Cushman & Wakefield. Neither this presentation nor any part of it shall form the basis of, or be relied upon in connection with any offer, or act as an inducement to enter into any contract or commitment whatsoever. NO REPRESENTATION OR WARRANTY IS GIVEN, EXPRESS OR IMPLIED, AS TO THE ACCURACY OF THE INFORMATION CONTAINED WITHIN THIS PRESENTATION, AND CUSHMAN & WAKEFIELD IS UNDER NO OBLIGATION TO SUBSEQUENTLY CORRECT IT IN THE EVENT OF ERRORS.

